



**BELGRAVE
ST. PETER'S
C of E PRIMARY
SCHOOL**



A Parents Guide For Reception





Contents

Welcome to Belgrave St Peters

Our Reception Curriculum

Our Reception

Keeping in Contact

Day to Day Information

School Dinners & Packed Lunches

Health and Safety

A Typical Day

Being Proud of Our Appearance

Collective Worship

Preparing Your Child for Reception

**And now we have these three: faith and hope and love,
but the greatest of these is love.'**

1 Corinthians 13:13



Welcome

We are delighted you have chosen Belgrave St Peters for your child's education. Miss Jessop and the whole of the teaching staff are really looking forward to meeting them and watching them flourish with us over the next 7 years.

This guide has been put together to help you navigate the first few weeks and give you a guide as to how our Reception operates and other information on the day to day running.

Starting at school is an exciting but sometimes it can be a little unsettling as well. By working together, your child's time at school and at home can make the most of the excitement and can help avoid any anxiety - not only now but during the rest of time your child is with us.

We'll start by taking a look at the curriculum that we work to, explain about the setting and how we communicate with you. We'll then take a look at a typical day in reception, our uniform and then how you, the parents can help us, but also, more importantly, help your child get the most out of their time in reception and these early stages of their education.

Most Importantly...

Play...Play...Play...Play!





The Reception Curriculum

Reception is part of the Early Years Foundation Stage (EYFS). Children in the EYFS learn by playing and exploring, being active, and through creative and critical thinking which takes place both indoors and outside. This is a statutory curriculum that lays the foundations of learning needed for more the more formal routines of school. By the time children leave the Reception year they will be ready to begin a transition into the 'National Curriculum', the curriculum that begins in Year One and continues until pupils leave secondary school. The EYFS curriculum is split into seven areas of learning which can be found below.

- **Personal, Social and Emotional Development: Self-Regulation:** includes showing an understanding of their own feelings and those of others.
Managing Self: includes managing their own basic hygiene needs and showing independence.
Building Relationships: includes working and playing with others, taking turns and making friends.
- **Communication and Language (CL):**
Listening, Attention and Understanding: includes holding conversations, making comments and asking questions about what they've heard and showing good listening skills.
Speaking: includes offering explanations and expressing their ideas and feelings in full sentences.
- **Physical Development: Gross Motor Skills:** includes showing balance and coordination in large movements, such as running, jumping and climbing. **Fine Motor Skills:** includes using a range of small tools, such as cutlery, paintbrushes and scissors, along with holding and controlling a pencil.
- **Literacy, Comprehension:** includes retelling stories and using new vocabulary.
Word Reading: includes using their knowledge of phonics to read letters, words and simple sentences.
Writing: includes writing letters, words and simple sentences.



- **Mathematics, Number:** includes understanding numbers to ten, subitising (the ability to recognise amounts in small groups without counting) and recalling pairs of numbers that make five or ten (number bonds). **Numerical Patterns:** includes counting to twenty and beyond and comparing quantities and number patterns, such as odd and even numbers.
- **Understanding the World, Past and Present:** includes knowing some similarities and differences between things in the past and the present day. **People, Culture and Communities:** includes knowing some similarities and differences between religious cultures and communities. **The Natural World:** includes exploring the natural world, making observations and knowing some similarities and differences between different environments
- **Expressive Arts and Design: Creating with Materials:** includes using different materials, tools and techniques to represent their ideas. **Being Imaginative and Expressive:** includes creating stories and singing rhymes, songs and poems.

At the end of the reception year your child will be assessed against seventeen 'early learning goals' which will be taken from the above areas.





Our Reception

Our Reception forms part of our foundation area of the school. The area is divided into the nursery and a reception class with a shared outdoor learning area. Our curriculum allows for children to develop across all of the seven areas of learning as laid out in our curriculum.

Alongside quality first teaching, our indoor and outdoor environments provide purposeful and engaging provision to encourage and support children in reaching their Early Learning Goals at the end of their reception year. This is done through daily whole class Phonics, Literacy and Maths lessons followed by small group sessions to ensure that new skills and knowledge are embedded successfully.



Keeping in contact

Here at Belgrave St. Peter's, we want to communicate with you, as much as possible, so all our teachers are available at the door at the end of each day to answer any questions that you may have and talk with you about your child's progress as needed.

You can expect to receive Interim reports and parents meeting in the both the Autumn and Spring Terms.

As the academic year comes to a close in July, you'll receive a final year report on your child.

We produce a weekly newsletter sent every Friday through Arbor. Which we encourage you to read regularly.

Throughout the year, we'll have 'stay and play' sessions as well as 'stay and read' sessions at various points.

We encourage you to attend these as much as possible as not only will they give you the opportunity to see how your child is progressing at school, you'll share with your child new learning experiences and meet other parents of your child cohort. More information on these session will be sent to parents in the Autumn term.

We also use the online learning Journal, Tapestry.

This is a secure system we use to record and share photos, observations and any comments.

This is done in line with the curriculum, to build up a record of your child's experiences during their time with us. This system allows us to work with you to share information and record the children's play and learning both in and outside of the classroom.



You'll be able to view, like and comment on any of our observations for your child. We also encourage you to add your own images, observations of what your child is experiencing outside of reception, be that a day out with the family or a short trip.

Throughout the year, we will inform you of our topics, events and other information through letters, on Tapestry and on the school website.



Day to Day Information

Be prepared for a little change as there are many new routines for parents and children to get used to, even if your child attended our nursery. You might find the following information useful during the first few months when everything is new! But please remember to ask if you have any questions. We'll show you a typical Day in reception in the coming pages but to highlight some of those points.

Our school start time:

Our reception is part of the main school so our doors opens at 8:35am and will close shortly after, so please plan your mornings so that you arrive at school in time for this. If you are late, you must take your child to the schools main reception. Our reception entrance is the door facing the junior playground. On entry to the building, the children will need to hang their coat up on their pegs and self register.

At home time:

Our school day ends at 3:15pm, school gates will be unlocked just before and promptly locked again at 3:30pm.

If someone else is collecting your child, please inform the class teacher or school office in advance of the collection time and ensure they are familiar with all security information hold for your child prior to their arrival.

If for any reason you are late collecting your child, please go to the schools main reception.

What your child will need

- ⇒ Coat
- ⇒ Named water bottle
- ⇒ School book bag
- ⇒ P.E Kit in a drawstring bag
- ⇒ Gloves and scarf during winter



It is **vital** that all of your child's property is marked with his / her name. Please check this regularly as marker pen does wash off.



School Dinners & Packed Lunch

For all children in Reception, years 1 and 2, the government provide universal infant school meals. This means that your child in these years can enjoy a daily school meal at no additional cost to you. Children will eat their lunch in our main hall supervised by members of staff. School meals are prepared on site by Leicester City Catering, they are nutritious and good value. If your child does not like the meal selection for a particular day, they may order a jacket potato for that day in advance. Please do encourage your child to take up this free meal and join their peers each day.

A Note on Free School Meals



The way schools receive funding for your child to receive a free school meal is changing. Families on low incomes can apply for their child to continue receiving Free School Meals through out their time with us. However, **you must apply**. This should be applied for even if your child is in Reception or KS1 as it will entitle your child to additional benefits such as subsidised school trips, free school uniform, free milk and targeted support for individual pupils. If you are not sure if you qualify, apply anyway, any member of the office or teaching staff can help you will this.

Packed Lunches

Packed lunches may be brought to school in a suitable, please used a clearly named packed lunch box. Lunch boxes are stored in the children's classroom. Please ensure that an appropriate amount of food is provided in the lunch box. We do encourage healthy eating, an example packed lunch would be a sandwich/rice/pasta, a piece of fruit, yoghurt and a drink.

Please refrain from food containing nuts.

Fruit and Milk

Children in Nursery, Reception and KS1 are entitled to a piece of fruit provided by the school. Water is available throughout the day for all pupils. Milk is available to all children until their 5th birthday. Children entitled to Free School Meals can also request free milk for break time. Milk is subsidised after their 5th birthday which parents can pay for.





Cooking

We like to cook in the Foundation Stage, please look out for notices on the windows. Please ensure that you inform the nursery of any food allergies that your child has.

Attendance and Absence

We believe the whole school community takes responsibility for attendance.

Our aims are:

- ⇒ To raise attendance of our pupils
- ⇒ To improve punctuality
- ⇒ To raise level of achievement
- ⇒ To maximise opportunities undertaken by children in school

When your child is absent from school please inform us by telephone, email, in person or by letter explaining the reasons for the absence. All absences must be reported to the school office on the first day of absence.

You will receive a message from the office if we do not hear from you.

It is very important that all absences are explained.

All unexplained absences have to be recorded as unauthorised.

Lateness

Children should not be late for school except in emergencies and then we need to be informed of the reason. Children arriving after 8.45am will be marked as "late" in the register and must report to the office and confirm their lunchtime arrangements.

Children arriving after registers close will be marked absent.

Holidays in Term Time

As you may already be aware, government guidelines, which came into effect on 1st September 2013, prevent head teachers from granting any leave of absence during term time, unless there are exceptional circumstances. A family holiday during term-time does not fall under the category of 'exceptional circumstances' and so head teachers are unable to authorise this. With this in mind, the Directors of Rise Academy Trust have taken the decision in line with Government policy to request that Leicester City Council, issue a penalty fine to parents who take their children out of school during term time. Rise Academy Trust would like to make it clear that all monies paid in penalty fines, goes to Leicester City Council and does not benefit either our school or Rise Academy Trust.



Health and Safety

We aim to maintain a high standard of hygiene and children are encouraged to wash their hands after going to the toilet and before eating. The whole school is a non-smoking area. Please don't bring dogs onto the site (guide dogs are the exception). The school has a full Health and Safety Policy available on request from the office.

Medicines in School

The school has a "Supporting Pupils with medical conditions" Policy.

If a child needs medication for a long-term condition, parents are asked to complete a form giving details of the medication. Inhalers can be kept in nursery if needed.

If a child requires short-term medication (e.g. a course of antibiotics) parents are requested to complete a form in order that staff can administer the medication during the day.

Accidents School

School staff are First Aid trained, which is regularly updated. In addition, some staff have Paediatric First Aid and First Aid at Work qualifications.

Illness during the school Day

If your child becomes unwell during the day, we will contact you. Please inform us about any change of contact details so that we can contact you.

Any child that has minor ailments will be treated by our qualified first-aiders. If your child has a minor bump to the head during the school day, we will inform you via Arbor.

If any injury is serious, we will contact you immediately.



A Typical Day

8.35am – The gates open and children are welcomed in to the classroom by their teacher and teaching assistant.

We encourage your child to hang up their bags and coats in the cloakroom and go to the toilet.

Then we'll get busy with all the activities on offer for the day.

8.50am – We will all come together on the carpet, and take the register

9.00am – We will do collective worship

9.15am – The children will then warm up their fingers and get ready to learn with a Dough Disco session!

Next we have a taught input session on the carpet, usually Literacy or Maths. Then its activity time where the children can access the activities within the classroom and the outdoor area!

10.30am It is break time where children will be offered milk and a fruit snack and play on the playground with other children from the school.

10:45am After playtime it is phonics where we learn all about sounds and how to read and write!

12:00pm It is lunchtime, where children can eat a hot school dinner or a packed lunch in the hall and then outside for a playtime

1:00pm We have another carpet input afternoon activities, then we move to more afternoon activities inside and out!

2:45pm We have an afternoon playtime followed by a story!

3:15pm We gather our things and go home!



Being Proud of Our Appearance

Like any good team, here at Belgrave St Peters, we are proud of who we are, and embrace our team spirit and want all children to foster a sense of community and belonging. For this, all children who attend out school from nursery all the way through the school, proudly wear our uniform as laid out below.

All our school embroidered uniform can be ordered from Uniform Direct (link below). All other items can be purchased from all major supermarkets.

School Uniform

The school colours are royal blue and grey.

Each day, children should wear a combination of the following;

- ⇒ A white polo shirt
- ⇒ Grey shorts, trousers, skirt or a pinafore dress
- ⇒ Black shoes (No open sandals or trainers)

In cooler weather, royal blue jumper or cardigan.

In warmer weather, girls may wear royal blue gingham summer dresses.

- ⇒ An outdoor coat

For P.E

- ⇒ A white t-shirt
- ⇒ Black shorts (or jogging bottoms / jeggings in colder weather)
- ⇒ Black pumps, elasticated or Velcro fastening
- ⇒ Named draw string PE Bag

It is **vital** that all of your child's property is marked with his / her name. Please check this regularly as marker pen does wash off.



Purchase Uniform Here



www.uniform-direct.com

EYFS Outdoor Learning Clothing

The EYFS curriculum promotes outdoor learning so we encourage children to have appropriate outdoor clothing for all weather. For example, a warm coat with a hood, hat, scarf, gloves and wellies for cold/wet weather. A sun hat and all-day sun cream for warmer weather is also advised.





Collective Worship

As a Church of England Primary School, Collective Worship is an integral part of every day in school for all staff and children. It is a time when the whole school comes together to learn, listen, reflect and pray. The main focus of our worships are the three values which form the fundamental ethos of our school. The definitions of these values were written collectively by staff and children at Belgrave.

Love: At Belgrave we show love by looking out for one another and sharing out love! We can help and take care of one another and make sure everyone in our school family is loved and cared for. We value our friends and family at Belgrave and beyond, demonstrating kindness for all.

Faith: At Belgrave, we know that having faith is important- whether that be a Christian faith, Muslim Faith, Sikh faith, Hindu faith or no faith. We show our faith by being considerate of others' feelings, telling the truth and being true to yourself. We also have faith in ourselves and each other!

Hope: When things are not going well, we know that at Belgrave we can have hope: hope for ourselves, each other and the wider world. We pray for others and support each other. We support charities through our value of hope- helping others and being kind.

Many significant and important events and celebrations, including those from other religions are also included in the schedule. These are decided by our Headteacher.

Every worship includes music and song both as a time for reflection and listening, and through raising voices in praise. We have close links with Trinity Church: Alex and Anne come to lead worship with us and run Messy Church in our school.



We have our collective worship at 9:00am each day.

Monday	Whole School worship (Nursery - Year 6) Looking at our conduct focus and value. Here we set our intentions for the week ahead, breathe together and wish each other well.	Teacher
Tuesday	Whole School worship (Reception - Year 6) Send the Light. This focuses on current issues/news, sending prayers to those in need around the world. A different class lead this session each week alongside their teacher.	Class/teacher
Wednesday	Wild Worship Wednesday/Song Practice We timetable two classes per week to use this time for 'Wild Worship'. The rest of the school comes together for song practice.	Class teacher
Thursday	Whole School worship (Reception - Year 6) Focusing on our school value for the half term, a related Bible story or a significant festival or event.	Teacher
Friday	Celebration worship (Nursery - Year 6) Here we reflect on our intentions for the week, the prayers we made and the successes we have had. Awards are given and celebrated and we all sing together.	SLT



Preparing Your Child

Preparing for your child for school can be a daunting idea, but it is important to remember this is the start of their education, and like you, we want them to have the best possible start. So here are some ideas and skills you could support your child with over the summer holidays which will benefit your child's start in school.

Self care

Encourage your child to recognise their own name and belongings.

Encourage them to dress themselves, learning to zip and un zip their own coats.

Developing their independent skills by going to the toilet by themselves and wiping their own bottoms .

Reading

We cannot emphasise this enough, Sharing books together is extremely important and a very enjoyable time. It is the best way to develop a love of books and stories. This promotes a good attitude towards reading and also has a positive impact on when a child starts to write and spell.

Expressive Art and Design

Exposure and the opportunity to use pencils, crayons, paintbrushes, lego, threading etc. All essential to develop fine motor skills.



Literacy

Talk about stories with me, what's happening in the pictures?

Give time to articulate and share ideas

Play around with words, make up fun and rhyming sentences

Help to write Birthday cards and shopping lists.

Mathematics

Point out the number of things rather than just the names, for example "we have 2 apples!"

Give lots of opportunities to count for a real reason and always give emphasis to the last number, for example, "There are **3** cookies".

Cut out a large shape from a cereal box (i.e. Circle / Triangle) and then cut the shape into 3/4 smaller pieces to make a simple puzzle.

When you're at the park, use words like 'Up', 'Under' and 'Between' to talk about what we see.

Physical & Mental Development

Developing a 'Growth Mindset' – Supporting your child to believe that you can improve your abilities by practising, or by finding a different way to achieve your goal instead of just giving up. Developing this kind of mindset can help make **children** more resilient for life.

Give them lots of opportunities to be active and practice running, jumping, balancing, climbing and swinging.



Instead of:

I'm not good at this.

1

Try thinking:
What am I missing?

I'm awesome at this.

2

I am on the right track.

I give up.

3

I'll use some of the strategies we've learned.

This is too hard.

4

This may take some time and effort.

I can't make this any better.

5

I can always improve so I'll keep trying.

I just can't do Math.

6

I'm going to train my brain in Math.

I made a mistake.

7

Mistakes help me to learn better.

They are so smart. I will never be that smart.

8

I'm going to figure out how they do it.

It's good enough.

9

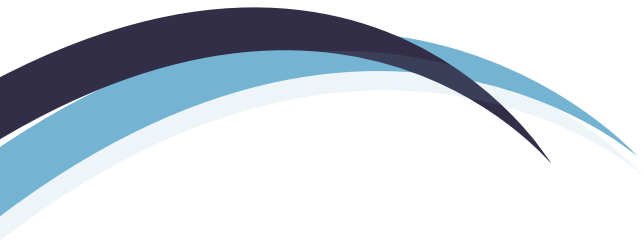
Is it really my best work?

Plan "A" didn't work.

10

Good thing the alphabet has 25 more letters!





A Space for Notes:







Head Teacher: Mrs Ouriach

**Belgrave St Peter's CE Primary School
Thurcaston Road
Leicester
LE4 5PG**

**Email : admin@belgrave.risemat.co.uk
Telephone: 0116 2665790**