



Belgrave Bulletin

End of Term Message

It has been a fantastic first half-term back at Belgrave St Peter's! The children have made lots of progress, whether that be academic or personal growth.

In nursery to year 2, the children and staff have been working incredibly hard with phonics and learning to read, and we are seeing the impact of that already. Key stage 2 children have been securing foundational skills in maths units like place value, addition and subtraction, as well as all children pushing themselves to learn their times tables. Year 6 have made great headway with their arithmetic skills already and their confidence is growing by the day.

We thank you for your support at home as we know that it is a team effort to ensure the children flourish and succeed.

I hope you have a lovely half-term break, and I look forward to seeing you all back at school on Monday 27th October.

Mr McLugash

Forest School

After half-term break, YEAR 1 and YEAR 3 will have forest school on a Wednesday afternoon.

Please ensure your child comes to school with a coat and wellies as the children do go out in all weathers. Wellies need to be in a labelled carrier bag.

WHAT'S IN THIS ISSUE:

- Message from Mr McLugash
- Forest School
- School Photo's

Attendance

Attendance for week ending 16th
October 2025

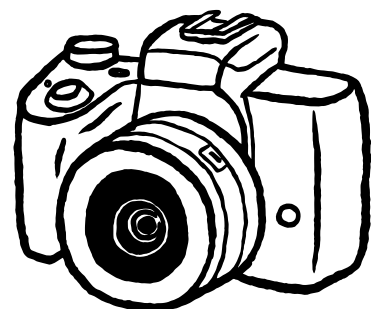


Nursery - 99%
Reception - 90%
Year 1 - 95%
Year 2 - 96%
Year 3 - 95%
Year 4 - 95%
Year 5 - 98%
Year 6 - 94%

Congratulations goes to Nursery for the highest attendance of 99%

School Photo's

Individual school photos will be taken on **Wednesday 29th October 2025**, Please ensure that your child/children are wearing their full school unifrom.





Stay and Read



Parents are invited into school to read with their children on the following days:

Nursery - Wednesday @ 8.35-9.00am

Reception: Wednesday @ 8.35-9.00am

Year 1: Tuesdays @ 8.35-9.05am

Year 2: Tuesdays @ 8.35-9.05am

Year 3: Tuesdays @ 8.35-9.05am

The session will end with a member of staff reading a story to the children and parents.

Reminder: Coats and Spare Shoes Needed

With the wet and cold weather approaching, please ensure that your child comes to school with a warm coat and a spare pair of shoes. These are especially important for activities like Forest School and for going on the grass during lunchtime.

We kindly ask that the spare shoes be sent in a plastic bag so they can be hung on your child's peg, keeping them off the floor and helping to keep things tidy.

Thank you for your support!



October Dates

17th - Inset Day

19th - 24th - half term

29th - Individual school photo's

29th - British Gynast Sam Oldham
Assembly KS2

30th - Poet Alex Wharton Assembly



Music lessons opportunity

We have an exciting opportunity for your child to learn a musical instrument. Today they should return home with a letter regarding 'Rocksteady' which will contain all the information needed. There is a limited number of places so if you wish to sign your child up it is important to do so immediately. These lessons will happen during school time but do come at a cost, if your child is in receipt of pupil premium, or you have any other questions regarding the payment, please speak to us as soon as possible.



Rise

16th October 2025

**BELGRAVE ST PETER'S
CofE PRIMARY SCHOOL**

Neighbourhood Services
Libraries • Community Centres

WHAT'S ON
FOR CHILDREN

Diwali Crafts

Join us at Belgrave Library on
Saturday 18th October for
Diwali Crafts & Stories.

Activities from 11.00 – 1pm

Children under 8 must be accompanied by an adult.



SCAN FOR MORE



INFORMATION

For further details about Neighbourhood Services:
W: leicester.gov.uk/libraries
leicester.gov.uk/communitycentres
E: libraries@leicester.gov.uk
communityservices@leicester.gov.uk
T: 0116 454 3540



Leicester
City Council



October Half Term at Leicester Cathedral



FREE



Tues 21 & Thurs 23 Oct
10am-12pm and 2.00-4.00pm

Make an autumnal
clay hanging decoration

FREE drop - in activity
Ages 3+ All children must be
accompanied by an adult

Wednesday 22 October
10am-12pm and 2.00-4.00pm

Creative Paper Architecture
Workshop

FREE drop-in activity
Ages 12+ All children must be
accompanied by an adult

FREE



COMING SOON



Soft play in the Nave!

Saturday 22 November
10am - 2pm

Ages 0-7
Bookable 'pay what you can' slots
available now

