



Belgrave Bulletin

Eco Extravaganza!

Last week, our wonderful Eco Council pupils had the exciting opportunity to attend the Eco Extravaganza. During the event, the children took part in a range of interactive workshops focusing on sustainability, biodiversity and climate action.

They also enjoyed exploring the inspiring eco projects created by other schools, sharing ideas and learning more about how we can all help protect our planet.

The children had a fantastic day and were a real credit to our school with their enthusiasm, curiosity and excellent behaviour.

We are incredibly proud to share that they returned to school with a fantastic achievement, winning the "YMD Boon Eco Extravaganza Special Award 2026." Well done to our amazing Eco Council for representing our school so brilliantly and for continuing to champion positive environmental change!



WHAT'S IN THIS WEEKS ISSUE:

- Eco Extravaganza
- Attendance
- Red Nose Day

Attendance

Attendance for week ending 13th March
2026



Nursery - 98%
Reception - 92%
Year 1 - 94%
Year 2 - 90%
Year 3 - 97%
Year 4 - 94%
Year 5 - 99%
Year 6 - 93%

Congratulations goes to Year 5 for the highest attendance of 99%

Red Nose Day

Get ready to go "Red to Toe" for Red Nose Day on Friday 20th March 2026!

Come to school dressed in as much red as you like from head to toe!

Wear anything red you can find:

Red hats, tops, trousers or even all of it!
How far you take it is up to you the redder, the better!

Donation:

£1 per student (£2 maximum per family)
Let's have fun, get creative, and raise money for a great cause.
Join us and go RED!

**RED
NOSE
DAY**



Stay and Read



Parents are invited into school to read with their children on the following days:

Nursery - **Tuesdays** @ 8.35-9.00am

Reception: **Tuesdays** @ 8.35-9.00am

Year 1: **Thursdays** @ 8.35-9.05am

Year 2: **Thursdays** @ 8.35-9.05am

Year 3: **Thursdays** @ 8.35-9.05am

The session will end with a member of staff reading a story to the children and parents.

Dates for the Diary

16th March - Year 3 Botanic Gardens Trip

19th March - Rock Steady Concert

20th March - Rose Nose Day 'Red to Toe'

25th Year 1 Guy Fawkes Workshop

25th March - Year 2 Art Exhibition

26th March - Easter Service

30th - 12th April - Easter Holidays

13th April - School Opens

15th MHST workshop Year 6

14th April - Class group photo's

23rd April - Year 4 Rise Voices

28th April - Year 5 Kingdom of Benin Drama workshop

18th May - Year 5 Bikeability

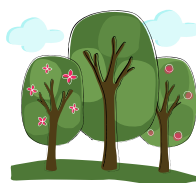
21st May - Year 6 Swimming Starts



Forest School

In the Spring Term 2, Reception and Year 1 will have forest school on a Wednesday afternoon.

Please ensure your child comes to school with a coat and wellies as the children do go out in all weather.



Community

This Sunday, Belgrave St Peter's Church are going to meeting for Messy Church and you are all invited!

We will be looking at a story of integrity and will have a variety of crafts and activities to do linked to it. We will join together for a celebration and share a jacket potato meal at the end. We look forward to seeing you: 3:30-5pm in the school hall.

Belgrave St Peters

Messy Church

March 15th 3:30-5

| | | |
|-----------------------------|----------------------------|----------------------|
| Fiery Scene | Nebuchadnezzar says | Feel the heat |
| Eat a Fiery Furnace! | Create a Totem | Mothers Day |

Every month at Messy Church we have great activities, crafts, challenges and experiences for families. This month we are thinking about Integrity with the story of the Fiery Furnace! We will finish with a shared meal of Jacket Potatoes.

[f](#) [ig](#) [stpetersbelgrave](#)



Belgrave St Peter's CofE Primary School Parent Survey

What our parents like most about our school:

I am happy that my child is part of the community - I couldn't ask for more.

All the staff have been really supportive, caring and professional in their roles.

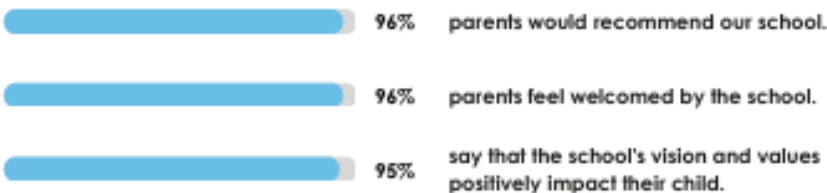
Good communication with parents.

What our parents think our school does really well:

Feeling safe.

Welcoming environment.

Communication & satisfaction.



What are our next steps?

- Consistency with homework expectations. Increased levels of communication with how to support at home.
- Greater communication around the support children with SEND receive and the impact this is having.
- Communicating the actions from pupil surveys and the impact they've had on school life.
- A Trust spotlight included in the newsletter to communicate the role the Trust plays enabling our children to flourish and succeed.

What our parents think the school could do better:

- Understanding Trust Role: Still unclear.
- Communication around SEND support.



Community

Belgrave St Peter's church is holding weekly litter picks during the season on Lent. We meet at 10:30 at the school carpark gates and go out into the local area. Equipment will be provided and refreshments afterwards. We would love you to come and join us.

For more information, contact Anne Scott - 07856 776604



Belgrave St Peter's
Church invites you to...


litter-pick

in
lent

Monday mornings in Lent,
come and pick up litter in the local area.

23rd Feb, 2nd, 16th and 23rd March
plus **30th March** as a family session

Meet outside the carpark gates of
Belgrave St Peters School at 10:30am.

1 hour litter-pick followed by refreshments in the
Community Room at the school.

Equipment and safety talk provided.

Contact Anne Scott (annescott@htl.church) for more details.



Join the
adventure!

98th
Leicester
North East

Scouts

Scouts are do-ers and give-it-a-go-ers.

Yes, we go **camping, hiking, swimming, and canoeing**. But, we also find new adventures indoors too- having fun, playing games, working in a team and taking on new challenges.

BEAVERS

6-8 years old
Thursday 6.30 -8pm

cubs

8-10½ years old
Thursday 6.30 -8pm

SCOUTS

10½ - 14 years old
Wednesday 7 - 8.30pm



Meeting Place:
Cedar Lodge, Bath
Street, Leicester.
LE4 7QE



Questions?

Contact: David
scouts98th@ntlworld.com
Sumaya
sumaya.qirbee@scouts.org.uk
07394 029728

Scan & Sign Up NOW!!!!

Join the adventure & learn #SkillsForLife